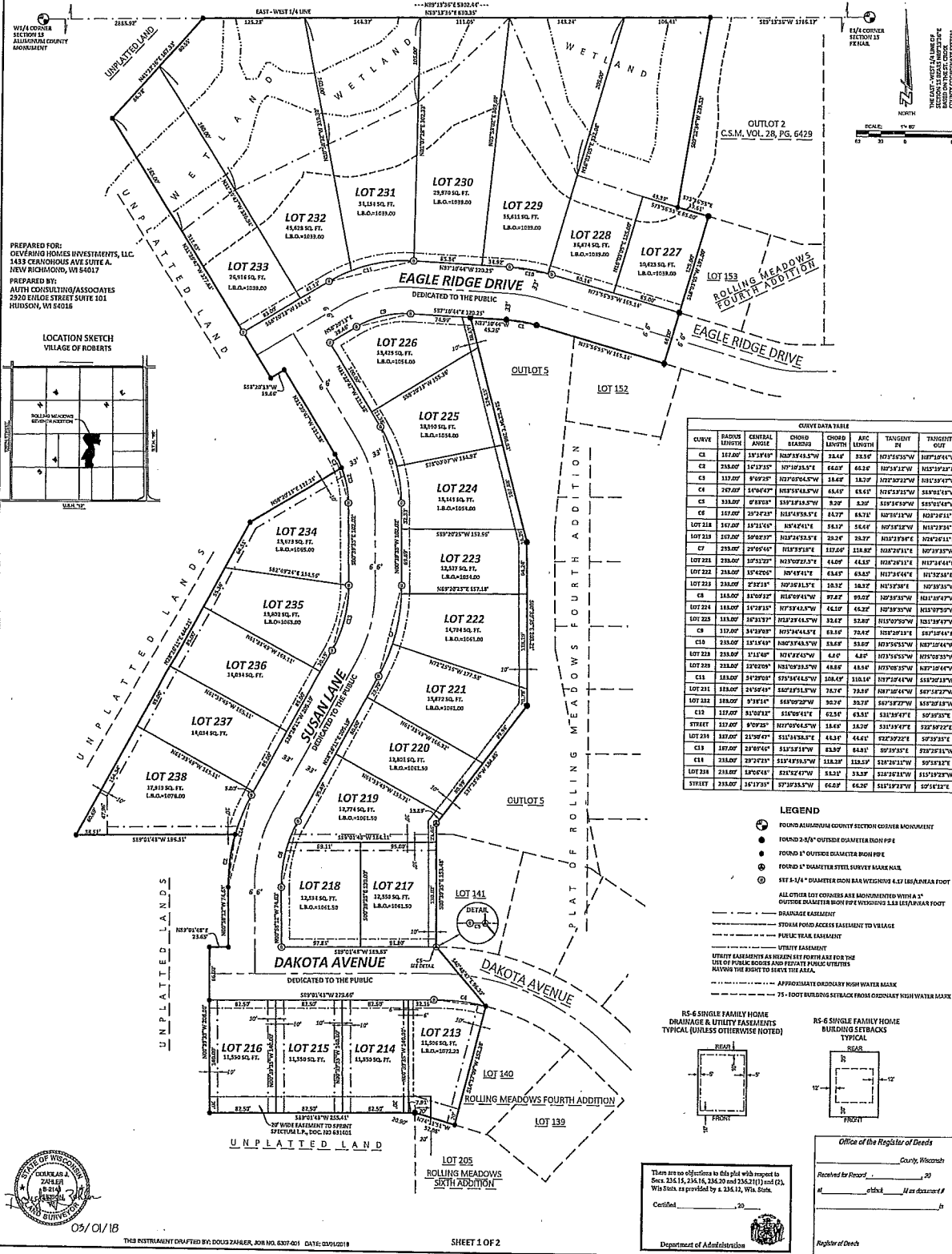


# ROLLING MEADOWS SEVENTH ADDITION

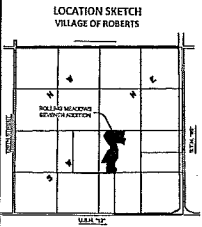
LOCATED IN PART OF THE NW1/4 OF THE SE1/4, AND PART OF THE SW1/4 OF THE SE1/4 OF SECTION 15, T29N, R18W, VILLAGE OF ROBERTS, ST. CROIX COUNTY, WISCONSIN, BEING OUTLOT 1 OF CERTIFIED SURVEY MAP VOLUME 28 PAGE 6429.

UNPLATTED LAND



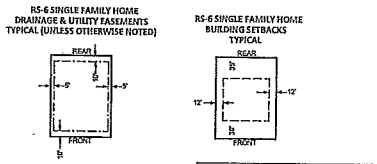
PREPARED FOR:  
OEVEERING HOMES INVESTMENTS, LLC  
1439 CERAMICUS AVE SUITE A  
NEW RICHMOND, WI 54017

PREPARED BY:  
AUTH CONSULTING/ASSOCIATES  
2320 ENLOS STREET SUITE 101  
MUSKOGEE, WI 53016



CURVE	RADIUS	CENTRAL ANGLE	CHORD BEARINGS	CHORD LENGTH	ARC LENGTH	TANGENT IN	TANGENT OUT
C1	117.00'	131°14'19"	N02°18'48.5"W	24.64'	28.55'	N07°16'55"W	N07°16'44"W
C2	238.00'	167°13'15"	N07°10'38.5"E	64.65'	64.62'	N07°18'12"W	N07°18'12"E
C3	117.00'	9°09'25"	N07°06'45.5"W	18.48'	18.27'	N07°02'22"W	N07°02'34"W
C4	207.00'	219°00'00"	N07°06'45.5"W	45.65'	45.67'	N07°02'32"W	N07°02'18"W
C5	117.00'	07°28'25"	N07°18'48.5"W	23.97'	23.97'	N07°16'55"W	N07°16'44"W
C6	167.00'	25°13'23"	N07°18'48.5"E	42.97'	42.91'	N07°18'12"W	N07°18'12"E
LOT 218	167.00'	18°11'48"	N07°42'41"E	74.17'	74.17'	N07°18'12"W	N07°18'12"E
LOT 219	167.00'	18°08'18"	N07°42'41"E	73.25'	73.27'	N07°18'12"W	N07°18'12"E
C7	293.00'	27°05'44"	N07°37'18"E	117.26'	118.82'	N07°37'18"E	N07°37'18"W
LOT 221	293.00'	10°51'22"	N07°02'32"E	44.09'	44.33'	N07°37'18"E	N07°37'18"W
LOT 222	293.00'	10°42'08"	N07°49'41"E	43.65'	43.82'	N07°37'18"E	N07°37'18"W
LOT 223	293.00'	9°28'18"	N07°49'41"E	38.32'	38.32'	N07°37'18"E	N07°37'18"W
C8	188.00'	81°09'52"	N16°09'41"W	97.87'	95.02'	N07°37'18"W	N07°37'18"E
LOT 224	188.00'	18°28'15"	N07°37'42.5"W	42.10'	42.22'	N07°37'18"W	N07°37'18"E
LOT 225	188.00'	18°33'37"	N07°28'42.5"W	32.47'	32.82'	N07°37'18"W	N07°37'18"E
C9	117.00'	31°39'00"	N07°34'44.5"W	31.65'	32.62'	N07°37'18"E	N07°37'18"W
C10	238.00'	12°15'00"	N07°34'44.5"W	51.85'	51.85'	N07°37'18"E	N07°37'18"W
LOT 226	238.00'	12°15'00"	N07°34'44.5"W	44.95'	44.95'	N07°37'18"E	N07°37'18"W
LOT 227	238.00'	12°02'00"	N07°34'44.5"W	44.85'	44.85'	N07°37'18"E	N07°37'18"W
C11	188.00'	24°37'00"	N07°34'44.5"W	58.42'	58.42'	N07°37'18"E	N07°37'18"W
LOT 231	188.00'	24°36'40"	N07°34'44.5"W	57.47'	57.47'	N07°37'18"E	N07°37'18"W
LOT 232	188.00'	9°38'14"	N07°02'22"W	30.78'	30.78'	N07°37'18"E	N07°37'18"W
C12	117.00'	07°02'12"	N16°09'41"W	62.35'	63.15'	N07°37'18"E	N07°37'18"W
STREET	117.00'	07°02'12"	N07°06'45.5"W	18.48'	18.27'	N07°37'18"E	N07°37'18"W
LOT 233	187.00'	23°08'47"	N11°18'38.5"E	44.31'	44.61'	N07°37'18"E	N07°37'18"W
C13	187.00'	23°09'40"	N11°18'38.5"E	43.97'	44.31'	N07°37'18"E	N07°37'18"W
C14	238.00'	27°28'15"	N11°49'39.5"W	58.23'	58.23'	N07°37'18"E	N07°37'18"W
LOT 234	238.00'	18°05'48"	N11°42'00"W	53.11'	53.11'	N07°37'18"E	N07°37'18"W
STREET	238.00'	18°13'35"	N07°38'53.5"W	64.68'	64.30'	N07°37'18"E	N07°37'18"W

- LEGEND**
- FOUND ALUMINUM COUNTY SECTION CORNER MONUMENT
  - FOUND 2 1/2" OUTSIDE DIAMETER IRON PIPE
  - FOUND 1" OUTSIDE DIAMETER IRON PIPE
  - FOUND 1" DIAMETER STEEL SURVEY MARK NAIL
  - SET 3/4" DIAMETER IRON BARN WEDGES 1/2 LB/ANNA FOOT
  - ALL OTHER LOT CORNERS ARE MONUMENTED WITH A 3" OUTSIDE DIAMETER IRON PIPE WEDGES 1 LB/ANNA FOOT
  - DRAINAGE EASEMENT
  - TYPICAL FRONT ACCESS EASEMENT TO VILLAGE
  - PUBLIC TRAIL EASEMENT
  - UTILITY EASEMENT
  - UTILITY EASEMENTS AS SHOWN SET FORTH ARE FOR THE USE OF POWER, GAS AND FIBER OPTIC UTILITIES NOTWITHSTANDING THE RIGHT TO SERVE THE AREA.
  - APPROXIMATE ORDINARY HIGH WATER MARK
  - 75-FOOT BUILDING SETBACK FROM ORDINARY HIGH WATER MARK



There are no objections to this plat with respect to Secs. 235.16, 236.16, 236.30 and 236.31(1) and (2), Wis. Stats. as provided by a J&L 12, Wis. Stat.

Certified: \_\_\_\_\_, 20\_\_\_\_

Department of Administration

Office of the Register of Deeds  
County, Wisconsin  
Received for Record: \_\_\_\_\_, 20\_\_\_\_  
at \_\_\_\_\_ o'clock \_\_\_\_\_ of \_\_\_\_\_  
Register of Deeds



05/01/18

THIS INSTRUMENT DRAFTED BY: DOUG ZAEHR, JOB NO. 6307-001 DATE: 02/06/18

SHEET 1 OF 2

PROJECT: OEVEERING HOMES ROLLING MEADOWS SEVENTH ADDITION VILLAGE OF ROBERTS, ST. CROIX COUNTY, WISCONSIN

FINAL PLAT

**A/Ca** Auth-Consulting/associates

DESIGNER OFFICE: 408 Technology Drive East, Suite 101, Menomonee, WI 54851, Tel: 715-521-5499, Fax: 715-521-4492, web: @aconsulting.com

DRAWER OFFICE: 2320 Lake Street, Suite 101, Menomonee, WI 54818, Tel: 715-521-5477, Fax: 715-521-4428, web: @slandsurveying.com

DRAWN BY: DJZ			
CHECKED BY:			
DATE: 2/23/18			
FWO FILED: 6307-001-Final			
REF FILE:			
JOB NUMBER: 6307-001	REVISION DESCRIPTION:	NAME:	DATE: